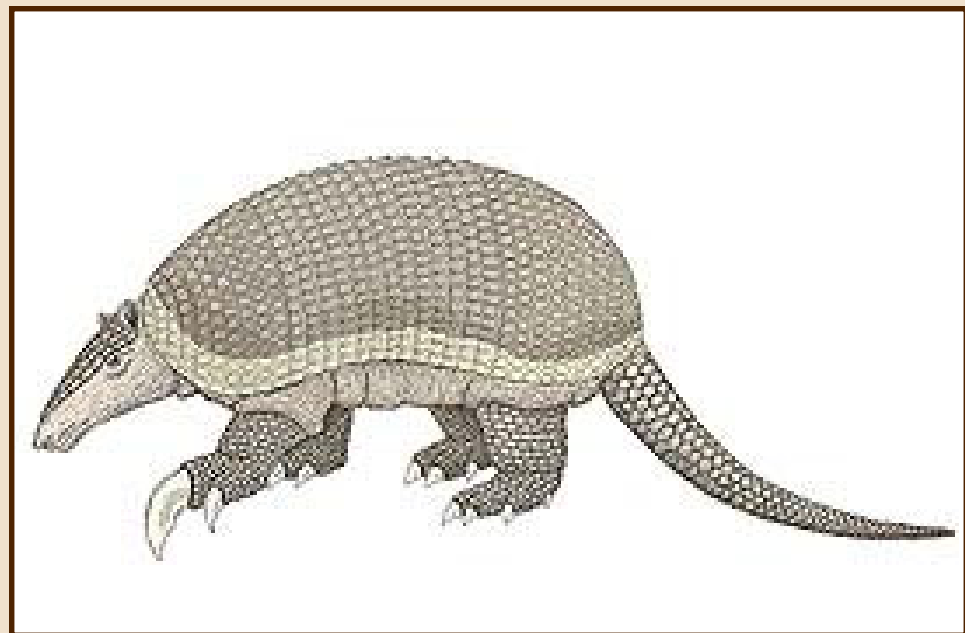


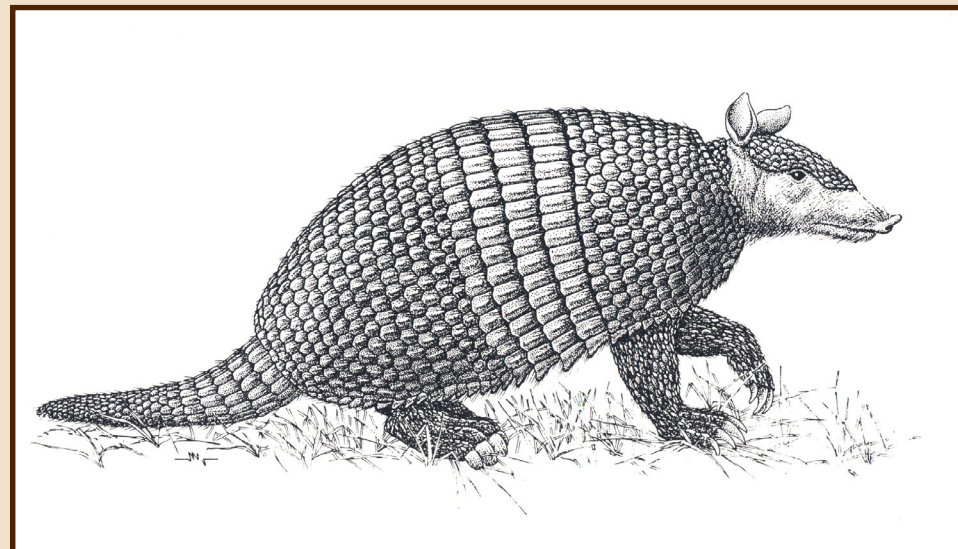
What are Armadillos?



Armadillos

Peg-like teeth
or teeth lost

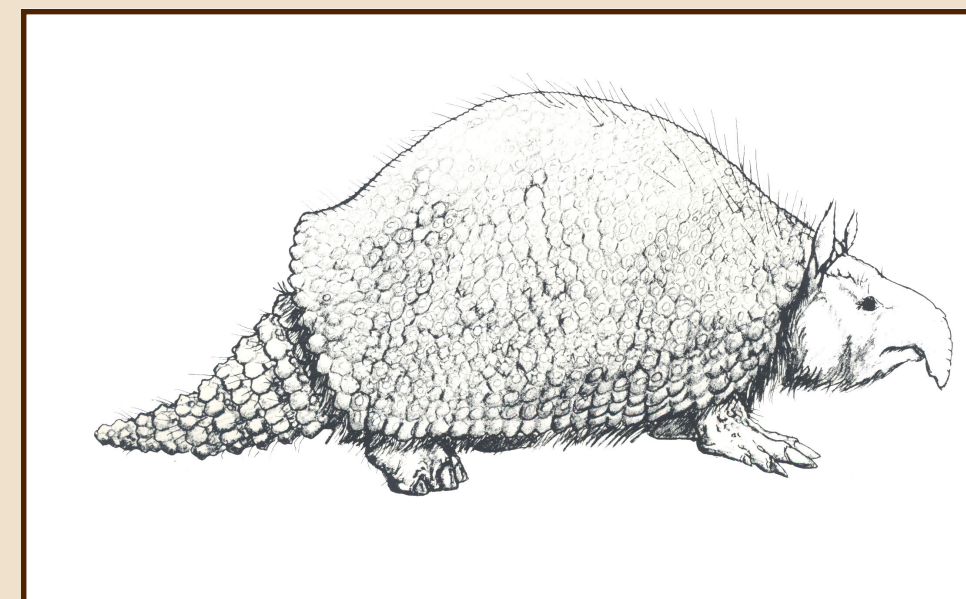
Family Dasypodidae



Pamphatheres

Two-lobed teeth

Family Pamphathiidae



Glyptodonts

Three-lobed teeth

Family Glyptodontidae

Carapace divided into two
(scapular and pelvic)
sections; movable bands
between them 0-20+

Carapace solidly fused

Superfamily Dasypodoidea

Superfamily Glyptodontoidea

Order Cingulata

Armadillos are Xenarthrans - mammals with extra joints which strengthen the lower back. Cingulates have a protective carapace (shell) formed from osteoderms (small bones under the skin) covered with scales. The head is covered with a bony casque (plate) of similar osteoderms, and the tail may have bony protection as well.