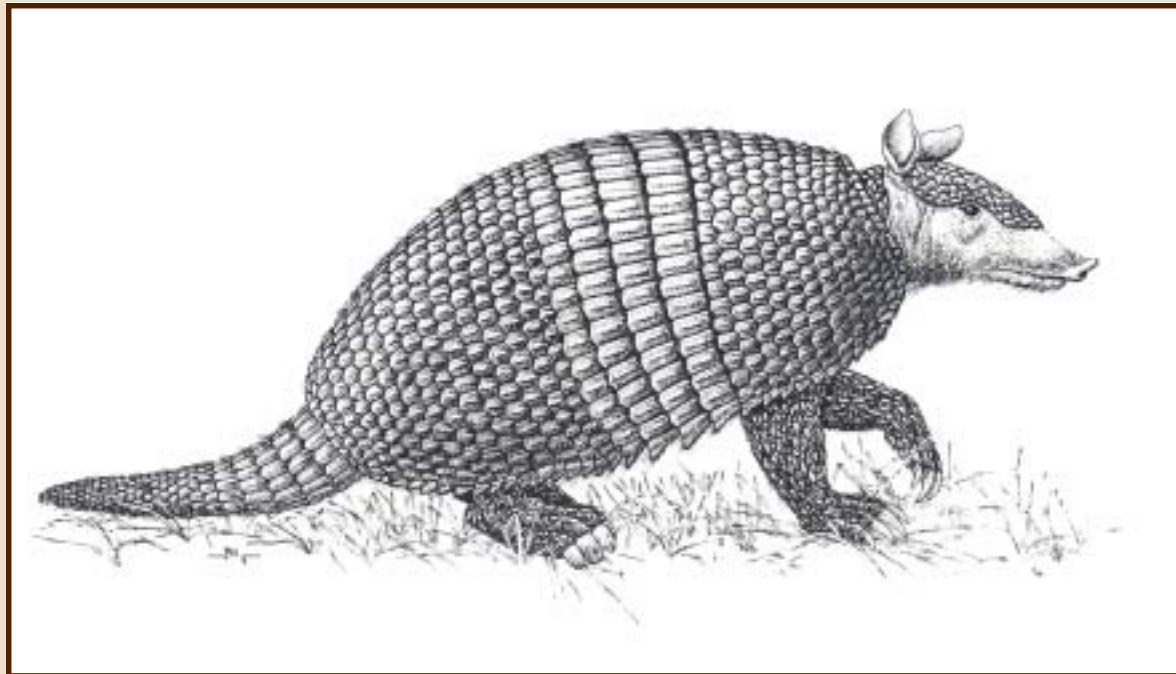


Pampatheres



Pampatheres, fossil relatives of the armadillo, were found in South, Central and North America. They have been found in Mexico, Florida, Oklahoma, Texas, and Kansas. Although not yet found in Arizona, they have been found in Sonora about 100 miles south of the border. Pampatheres have a large, fused shell portion in the front and rear, with 3 moveable bands connecting them. The teeth of pampatheres are two-lobed. They primarily fed on vegetation, but may have also fed on insects and other small prey animals, similar to today's Nine-banded Armadillo.

Pampatheres originally evolved in South America, appearing in Central and North America after the Panamanian land bridge was established about 3.5 million years ago.

Holmesina evolved in size through time, beginning as the small creature on display here, to an armadillo-like animal nearly three times as long and weighing over 600 pounds. They died out approximately 11,500 years ago.