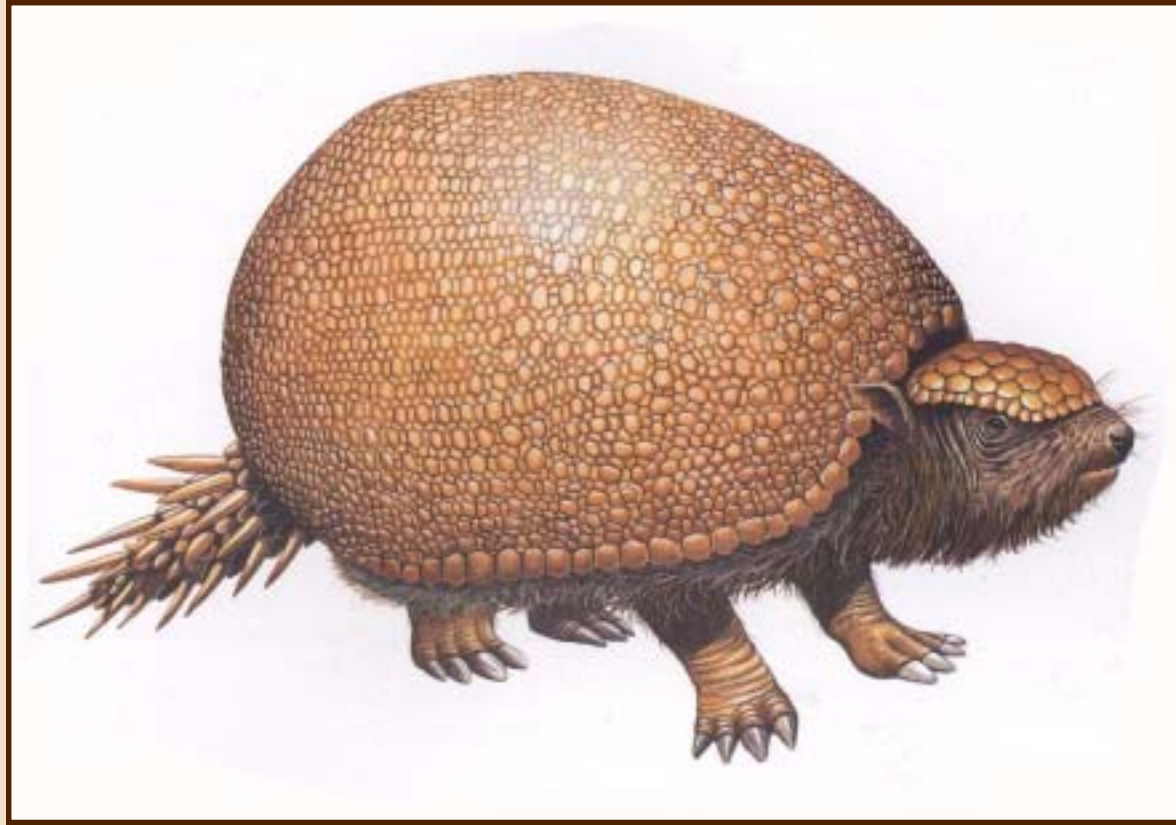


# Glyptodonts



**Glyptodonts**, giant fossil relatives of the armadillo, were found in South Carolina, Florida, Texas, Oklahoma, New Mexico, and Arizona. Their northern spread was probably limited by freezing winter temperatures, while they likely did not

spread into California because the Colorado River acted as a barrier to their dispersal.

Glyptodonts are herbivores, and some paleontologists have suggested that they may have been semi-aquatic, preferring the lush vegetation associated with marsh, swamp and lake-edge habitats. Their high-crowned, ever-growing teeth suggest a more abrasive diet, such as grasses, and therefore a somewhat drier habitat.

While their hard bony carapaces would have offered substantial protection, they were not immune from predation; one skull from near Safford, Arizona shows two holes made by the long canines of a saber-toothed cat.

*Glyptodon clavipes* is from South America. It is closely related and very similar to glyptodonts from Central and North America. The earliest glyptodont from North America is from a site near Safford, Arizona. Glyptodonts survived until the end of the Ice Age, some 11,500 years ago.